

076800 Triumph Tiger 800 Hugger Instructions (all model variants)

Kit Includes:

4X M6 x 20mm Flanged Button Head Bolts

CBOL2165

4X 13mm Grommet & Spacers

CGRO0013/CGRO0017

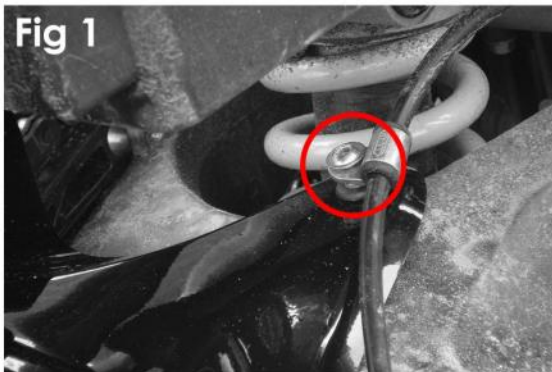
- Remove the original chainguard.
- Remove the exhaust can and both the brake hose mountings.
- Fits the Grommets & Spacers to the 4 holes in the Hugger - fitting the Grommets first aids fitting.
- Slide the Hugger over the tyre from the rear and attach the front fixing point on the exhaust can side with the brake hose clip on top of the Grommet, then finger tighten (**See Fig 1**).
- Fit the rear mounting point on the exhaust can side with the brake hose clip on top of the Grommet, then finger tighten again (**See Fig 2**).
- Now fit both mounting points in the chainguard side and tighten all mounting points fully.
- Finally re-fit the exhaust can.

Please check all fasteners and alignment of the Hugger periodically.

When riding two up, offroad or on rough surfaces, we recommend adjusting the spring preload tension to compensate for added weight.

The battery box can collide with the Hugger due to the large amount of travel in the shocks standard set-up.

Please consult you owners manual or Triumph for more information on adjustment.



sales@pyramid-plastics.co.uk

+44 (0)1427 677990

www.pyramid-plastics.co.uk