



Read these instructions carefully and thoroughly before beginning work. Dealers, if installing this windshield for a customer, please give them this manual. It contains information needed to properly maintain and use this product.



Attention:

Special notes and cautionary measures which can prevent damage to the accessory or motorcycle.



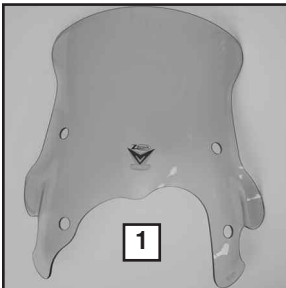
Note:

Tips for facilitation of operation, control and adjustment, as well as maintenance work.

Z2470

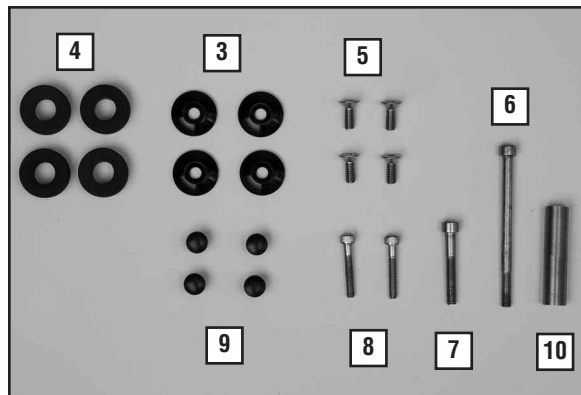
Z2472

Z2471



CONTENTS OF KIT

Item	Description	Part No.	Qty.
1	VStream® Windscreen		1
2	Bracket	34-351050-000	1
Bag #1081			
3	Cap, Aluminum	34-346037-000	4
4	Grommet	44-447304-000	4
5	Screw, M6 x 12	51-514212-000	4
6	Screw, M6-1.0 x 90	51-515390-000	1
7	Screw, M6-1.0 x 40	51-515272-000	1
8	Screw, M5-.8 x 30	51-515231-000	2
	Plug, Plastic	44-448840-000	4
10	Spacer	49-495378-000	1



TOOLS REQUIRED:

T-25, T-27,
Putty or magnet (to retrieve screw)
#5 Hex

VStream® windshield patent no. 7,387,328



Figure 1



Figure 1a

PREPARATION

1. Remove the stock windshield. Stock hardware will not be re-used. **(T25 Torx) Figure 1, 1a.**



Figure 2

2. Install Plug (9) into hole. **Figure 2**

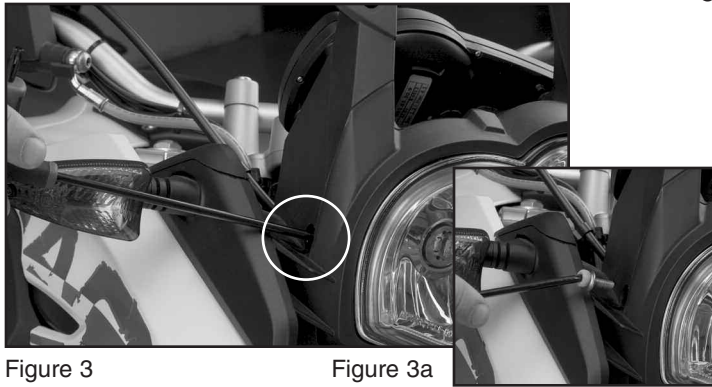


Figure 3

Figure 3a

3. Remove screws holding headlight.
Right: (T27 Torx) Figure 3, 3a.



Figure 4

Left: (T27 Torx) Figure 4.

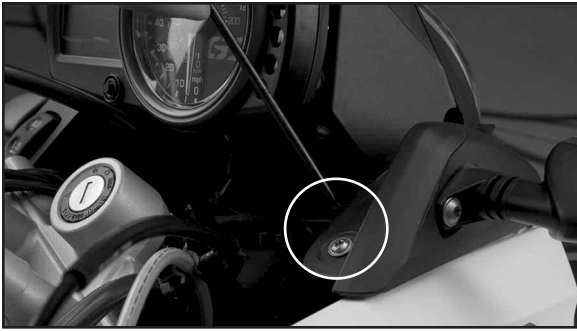


Figure 5

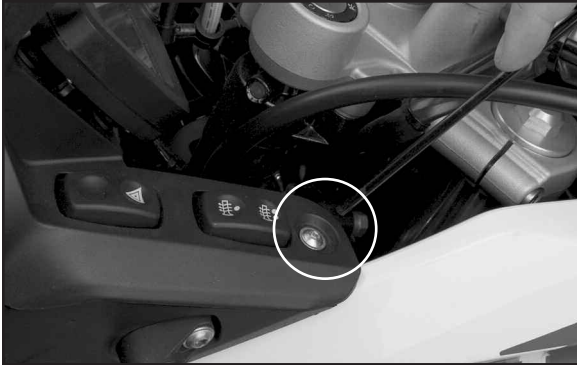


Figure 6



Figure 7



Figure 8

PREPARATION

4. Remove screws holding dash panel.
Right: (T25 Torx) **Figure 5.**

Left: (T25 Torx) **Figure 6.**

INSTALLATION

1. Insert spacer (10) into left side headlight hole. **Figure 7**

2. Place Bracket (2) in position at headlight mount points. **Figure 8**



Figure 9

3. Install headlight Screws.



DO NOT FULLY TIGHTEN

Left: M6-1.0 x 90 (6). (5mm Hex Key) **Figure 9**

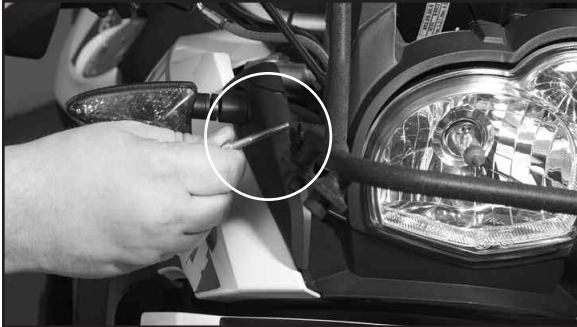


Figure 10

Right: M6-1.0 x 40 (7). (5mm Hex Key) **Figure 10**



Figure 11

4. Swing Bracket (2) into position. **Figure 11**



Figure 12

5. Install dash Screws (8).

Right: M5-8 x 12 (8). (4mm Hex Key) **Figure 12**



Figure 13



Figure 14



Figure 15

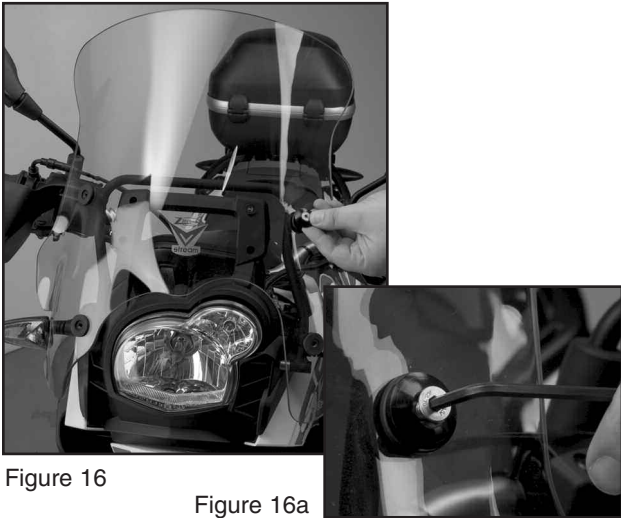


Figure 16

Figure 16a

Left: M5-.8 x 12 (8). (4mm Hex Key) **Figure 13**

4. Firmly Tighten the 4 Screws. Figure 14

Headlight Screw Left and Right (a). **Figure 14**

Dash Screws Left and Right (b). **Figure 14**

5. Install Grommets (4). Figure 15

6. Install VStream Windshield to mount Bracket. Figure 16, 16a

Cap, Aluminum (3)
Screw, M6 x 12 (5) (4mm Hex Key)

Tighten Screws until firm. **DO NOT OVER TIGHTEN**



Ask for Shield Wash™ and RainZip® at your local dealer or visit www.ztechnik.com.

CLEANING AND MAINTENANCE

To clean the screen, wash with a clean soft cloth, plenty of warm water and if necessary, a non-abrasive soap such as dishwashing liquid. Flannel or soft chamois make good cleaning cloths. **Paint, glue residue or grease removal:** Moisten cotton with naphtha or turpentine followed by a wash as above. National Cycle **Shield Wash™** (N1401-01) makes a good daily cleaner and comes with a handy travel size bottle. Shield Wash is safe for all windshields and helmet visors.

Do not clean polycarbonate in hot sun or high temperatures. Do not clean the screen with glass cleaners.

Do not allow brake fluid, alcohol, or strong solvents to contact the screen.

RAIN REPELLENT

Do not use rain protective products made for automotive glass. We recommend National Cycle's **RainZip®** (N1410-10) to keep your windshield clear in rainy weather.



Register your windshield online at www.ZTechnik.com

ZTechnik 3-Year Limited Warranty

ZTechnik hereby warrants to the original registered owner of a ZTechnik polycarbonate windshield for a period of three years from the date of purchase against breakage. This limited warranty is expressly limited to the replacement of the polycarbonate windshield. This limited warranty does not include scratches, coating failure, cosmetic wear and tear, replacement of hardware, or any consequential damages or expenses including labor cost of installation, removal and/or replacement, inconvenience, inbound freight expenses or damage to any other component of the motorcycle or any other accessories. Certain chemicals, generally known as acidic hydrocarbons, are known to cause polycarbonate damage and will not be covered under this limited warranty. Please refer to the cleaning instructions supplied with all ZTechnik windshields.

Visit www.ztechnik.com for further details, or call or write ZTechnik / PO Box 158 / Maywood, IL 60153 / 708-3430400

⚠ WARNING

Never ride your motorcycle with loose accessory mounting hardware. Check the hardware for tightness regularly.

Today's motorcycles are built with enough frame rigidity to withstand the moderate loads imposed on them by the foreseeable addition of an accessory(ies). If an accessory(ies) adversely affects your motorcycle's stability, immediately remove the accessory(ies). Do not ride a motorcycle that exhibits unsafe handling traits.

Have experienced service personnel correct any problem before riding with the accessory(ies) installed. For further questions concerning handling problems associated with an accessory(ies), contact your dealer, motorcycle manufacturer, or accessory manufacturer.

Sunlight reflected off the inside curvature of the windshield can, at certain times of day, cause extreme heat buildup on the motorcycle's instruments and possibly even melt them. Exercise care in parking to avoid this. Park your motorcycle facing the sun or place an opaque object over this area.

View other ZTechnik® products for the F650GS online at www.ztechnik.com or www.nationalcycle.com

VStream® windshield patent no. 7,387,328