



PARTS LIST

QTY.	DESCRIPTION
1	Speedometer Cowl
1	Alcohol Wipe



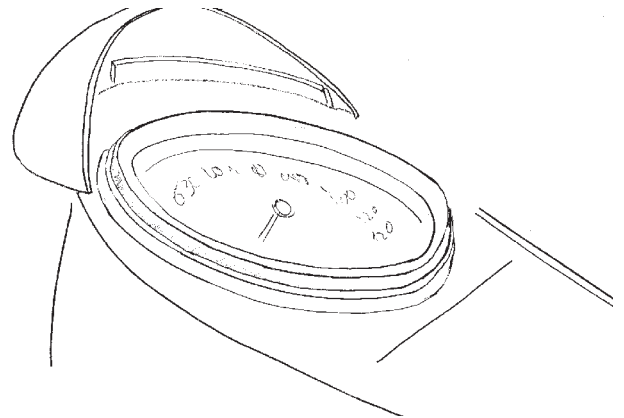
None Required

PREPARATION

Place the motorcycle securely on its side stand. Thoroughly clean the speedometer area before installing the Speedometer Cowl. **Do not use polishes or silicone.**

INSTALLATION OF GLARESTOPPER™

1. Using an Alcohol Wipe, clean the chrome ring around the speedometer.
2. **Before you remove tape liner**, determine the best mounting position by placing the Speedometer Cowl on outside speedometer ring.
3. Remove the red backing from the adhesive on the inside of the Speedometer Cowl.
4. Position the Speedometer Cowl on the speedometer ring. Adjust the position if required.
5. When the Speedometer Cowl is satisfactorily positioned, squeeze the Speedometer Cowl against the speedometer ring.
6. Let adhesive tape set-up 4-6 hours before using motorcycle.



MAINTENANCE

This product can be maintained with a cleaner or polish suitable for chrome.