



INSTALLATION AND OWNER'S MANUAL

N942 LIGHT BAR for

HONDA® VTX 1800 Motorcycle

PREPARATION

1. Make certain the motorcycle is securely positioned for this installation. Cover the front fender with a protective cloth to avoid scratches.
2. **Move Turn signals:** Remove the clamp screws from the front turnsignals, the clamps will come off (hex key wrench, 5mm).
3. Position the turn signals below the lower triple-clamp. **A**
4. Reinstall the clamps and screws. Verify that the turn signals are located symmetrically and pointed forward.
5. Tighten the screws to 5 ft/lbs.

PARTS LIST

Description	Qty.
Lightbar Assembly, N942	1
Wire Connectors	1



5mm Hex Key
#2 Phillips Screwdriver
12mm Wrench
Socket Wrench
Slip Joint Pliers
12mm Deep Socket

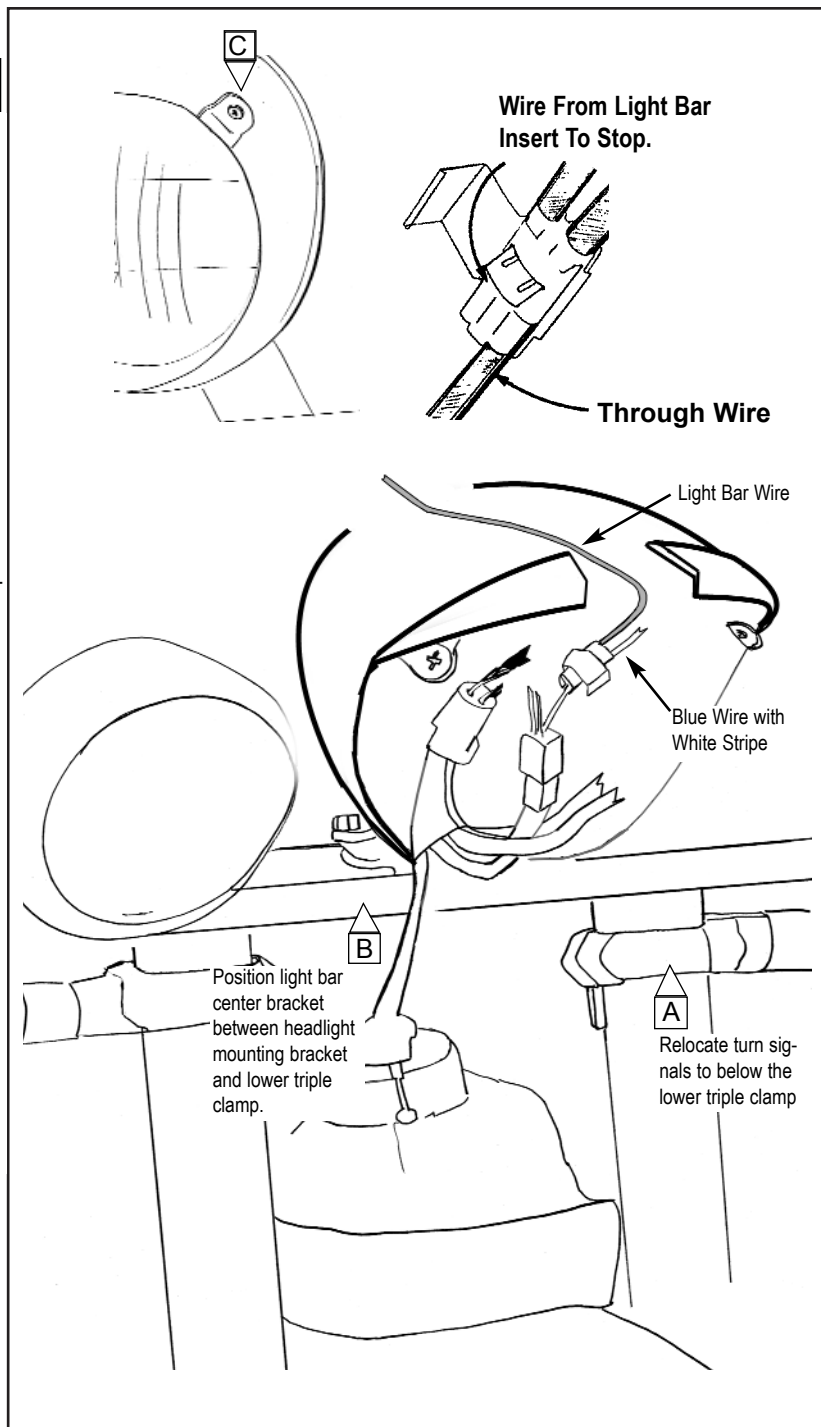
INSTALLATION

1. **Mount the Light Bar Assembly:** Remove the nuts from the screws that hold the headlight to the lower triple-clamp. **B** (12mm Wrench and 12mm Socket)
2. Remove the screws.
3. Position the Lightbar center bracket between the headlight mounting bracket and the lower triple-clamp.
4. Reinstall the original screws through the headlight mounting bracket, the lightbar center bracket and the lower triple-clamp.
5. Reinstall the nuts and tighten to 15 ft/lbs.
6. **Wire the Light Bar Assembly:** Remove the headlight and rim from the headlight shell (Screwdriver) by removing the upper screws inside the rim. **C** The rim is hooked at the bottom.
7. Route the wire from the Lightbar over the lower triple-clamp and into the headlight shell through the hole in the rear of the shell.
8. Follow the wires from the headlamp back to where the harness splits into four wire groups. The shortest wire group goes to a black six-pin connector with five wires in it.
9. Attach to the white wire for spotlight operation with lo-beam, attaching to the blue wire will provide spotlight operation with the hi-beam (Wire Connectors and Slip Joint Pliers.)
10. Test the lights by turning the ignition switch to on. The spotlights should illuminate when the headlight is at lo-beam. The spotlights will go out when the headlight is switched to hi-beam.
11. Reinstall the headlight and rim.

⚠ WARNING

After wiring the light bar check for clearance. Make sure the wires can not get pinched when the fork is turned to a full fork lock left and right.

NOTE: Check local regulations for proper passing lamp operation. Some states require passing lamps be lit only with hi-beam.



TESTING

1. Check all lights for proper operation.
2. Check the tightness of all fasteners that have been involved in this installation

MAINTENANCE

The high quality chrome finish of your National Cycle light bar can be maintained with any quality chrome cleaner and /or polish.

Replacement bulbs and bulbs for the turn signals can be found at motorcycle and accessory dealers as well as automobile parts stores, or by calling National Cycle.

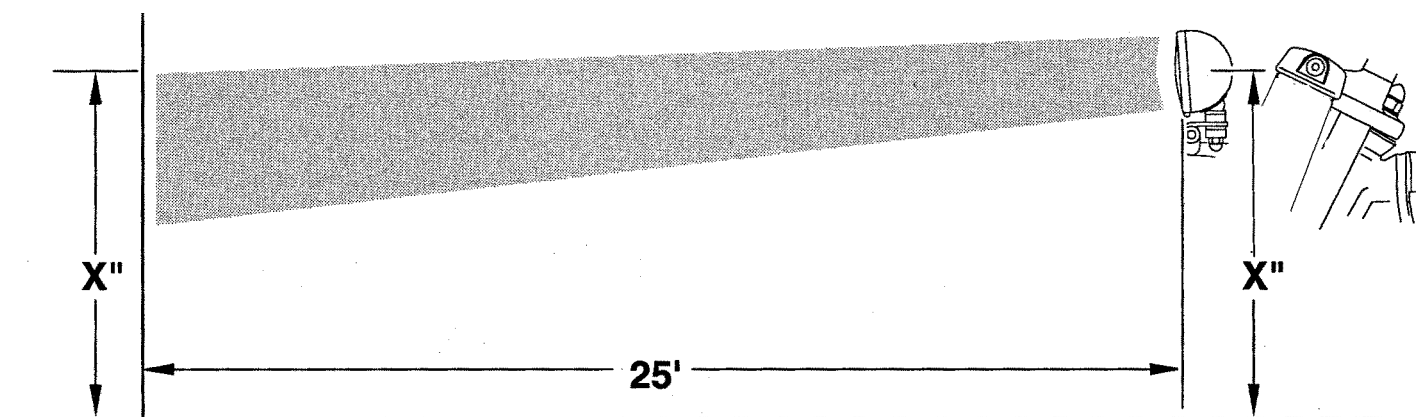
REPLACEMENT PARTS

Order replacement parts through your local dealer or contact National Cycle.

Description	N942 Part No.	N942E Part No.
Light Head Assembly Right Side	90-910501-000	90-910501-000
Left Side	90-910501-000	90-910501-000
Sealed Beam Bulb Only For Above	90-901000-000	
Lamp Assembly E13/DOT Reflector, Lens and Bulb		90-901011-000
Turn Signal Assembly	90-930920-000	90-930921-000
Turn Signal Lens	90-930210-000	90-930212-000

Turn Signal Bulb Only: Bulb 1157 Available at Most Auto Parts Stores.

ADJUSTMENT



1. Aim the driving lamps. Each lamp should shine straight ahead or slightly to the right of the motorcycle. The top of the lamp beam should be just below the center of the lamp at a distance of 25'

2. To correctly aim the driving lamps: Stand the motorcycle in an upright position.

3. Turn the motorcycle main switch to on.

4. Turn the driving lamp switch to on.

5. Loosen each driving lamp post nut and aim the driving lamp beam as shown. Item D.

6. Tighten each post nut and check each lamp for correct aim.

Installing optional N9005 Light Head Visor.

1. Loosen the rim of the light head assembly. (Phillips Screw Driver).
2. Slip tabs of Visor under rim. Item E.
3. Shape visor / Visor Tabs to conform to contours of light head assembly.
4. Retighten rim.



To adjust vertical aim you will need:

3/4" Open Ended Wrench
(19mm)

